

# Endoscopic Ultrasound (EUS), Upper



**Archbold**  
Gastroenterology

During an EUS an insertion tube is placed down your food pipe to capture images of the esophagus, stomach and parts of the small intestine. Since an ultra sound probe is part of the insertion tube, your doctor will be able to see beyond the lumen of your gastrointestinal tract to evaluate portions of lungs, lymph nodes in your chest, bile duct, gall bladder and liver.

Your doctor will be able to take small tissue samples to identify lesions and stage cancer, drain cysts or deliver medication.

## Preparation

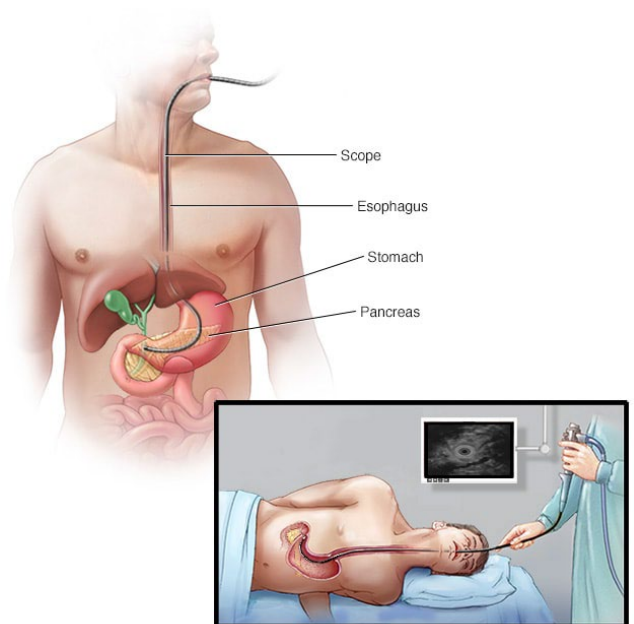
- Please make sure to follow your provider's instruction regarding your medication.
- You should have **no solid food after midnight** and only clear liquids (like water) **up to 4 hours prior to your arrival time.**
- Always bring a current list of all your medication
- Bring your identification and insurance card
- Leave all your valuables at home
- **Arrange for an adult to drive you home and look after you for 24 hours.**

## Procedure and discharge

After check-in, our nurses will take you to the pre-op area as soon as a bay becomes available. You will be seen by your gastroenterologist and anesthesiologist. Your nurse will make you comfortable, enter information regarding your health history into our electronic chart and start your IV. When your intra-op team is ready for you, you will be taken to the procedure room. Your anesthetist will give you sedation prior to procedure start. The great majority of patients sleep through the entire test.

After your procedure, you will wake up in the recovery room. You will likely feel sleepy and may be slightly unsteady. You may have a sensation of fullness and a mild sore throat. Post procedure nausea is possible but unlikely. Your gastroenterologist will go over findings with you and your family. Your nurse will give you discharge instructions including signs and symptoms of infection, bleeding and other emergencies.

When you are ready for discharge, your care taker will pull the car into the discharge area and your nurse will take you out in a wheelchair. After departure, you will likely be able to resume your regular diet. You may resume regular activities the day after your test.



© MAYO FOUNDATION FOR MEDICAL EDUCATION AND RESEARCH. ALL RIGHTS RESERVED.